

Validation Data Sheet

dPCR CGT Assay

| dPCR CGT assays | Albumin (FAM, HEX, Cy5) |
|----------------------------------|---|
| Assay catalog numbers | 250300, 250301, 250302 |
| dPCR instrument | QIAcuity Digital PCR System |
| dPCR master mix | QIAcuity MasterMix |
| Probe fluorophores and quencher | FAM, HEX: ZEN/lowa Black Cy5: TAO/lowa Black |
| Amplicon length | 115 bp |
| Restriction enzyme compatibility | <i>EcoRI</i> , <i>HpaI</i> , <i>HpaII</i> , <i>PvuI</i> , <i>SmaI</i> , <i>XbaI</i> , <i>XhoI</i> |

Description

The Albumin assay is a wet-lab validated, 20x assay targeting the albumin sequence.

Synthetic DNA sequence for positive controls

```
TAGCTATAGAAAGTTGCTGTCATCTCTTGTTGGGCTGTAATCATCGTCTAGGCTTAAGAGT
AATATTGCAAAACCTGTCATGCCACACAAAATCTCCCTGGCATTGTTGTCTTTGCAGA
TGTCAGTGAAAGAGAACCAGCAGCTCCCATGAGTTTGGATAGCCTTAT
```

Sample data

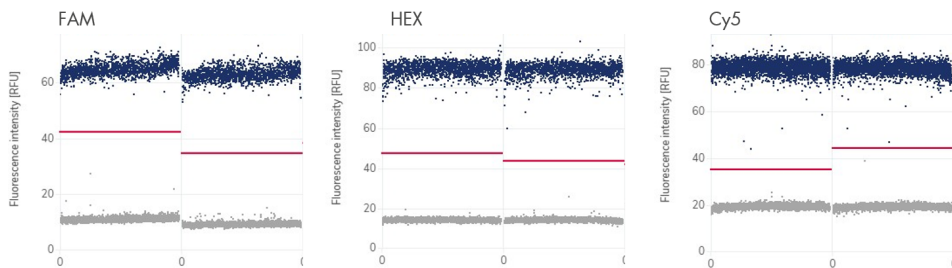
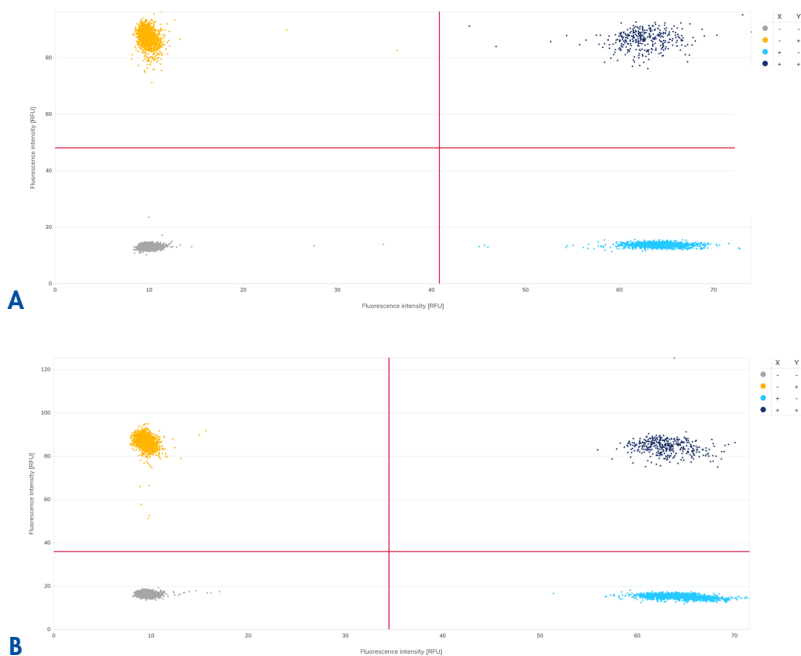


Figure 1. 1D scatter plot. Single-well data of Albumin assays (Green, Yellow, and Crimson channel).



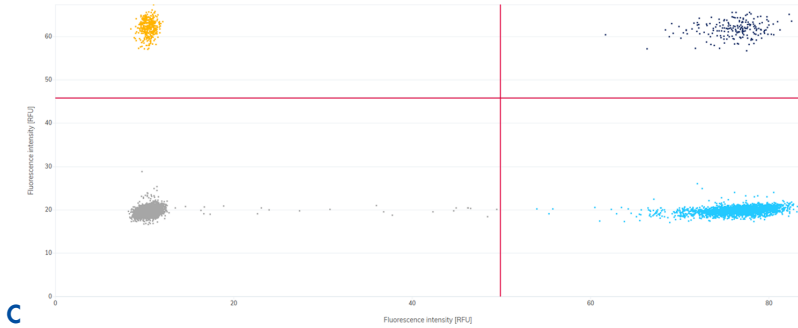


Figure 2. 2D scatter plot. Single-well data of **(A)** Albumin assay (Hex channel, Y-axis) and 5'LTR assay (FAM channel, X-axis) or **(B)** Albumin assay (Green channel, X-axis) and 5'LTR assay (Yellow channel, Y-axis) or **(C)** Albumin assay (Crimson channel, Y-axis) and 5'LTR assay (Yellow channel, X-axis) with DNA input.

Document Revision History

| Date | Description |
|---------|-----------------|
| 07/2025 | Initial release |

For up-to-date licensing information and product-specific disclaimers, see the respective QIAGEN kit handbook or user manual.

Trademarks: QIAGEN®, Sample to Insight®, QIAcuity®. Registered names, trademarks, etc. used in this document, even when not specifically marked as such, are not to be considered unprotected by law.

07/2025 HB-3733-001 © 2025 QIAGEN, all rights reserved.

