

Validation Data Sheet

dPCR CGT Assay

| dPCR CGT assays | RRE (FAM, HEX, Cy5) |
|----------------------------------|---------------------------------------------------------------------------------------------------|
| Assay catalog numbers | 250316, 250317, 250318 |
| dPCR instrument | QIAcuity Digital PCR System |
| dPCR master mix | QIAcuity MasterMix |
| Probe fluorophores and quencher | FAM, HEX: ZEN/lowa Black Cy5: TAO/lowa Black |
| Amplicon length | 70 bp |
| Restriction enzyme compatibility | <i>EcoRI</i> , <i>HpaI</i> , <i>HpaII</i> , <i>PvuI</i> , <i>SmaI</i> , <i>XbaI</i> , <i>XhoI</i> |

Description

The RRE assay is a wet-lab validated, 20x assay targeting the lentiviral Rev response element (RRE).

Synthetic DNA sequence for positive controls

```
GCTGACGGTACAGGCCAGACAATTATTGTCTGGTATAGTGCAGCAGCAGAAACAATTTGCT  
GAGGGCTATTGAGGCGCAACAGCATCTGTTGCAACTCACAGTCTGGGGCATCA
```

Sample data

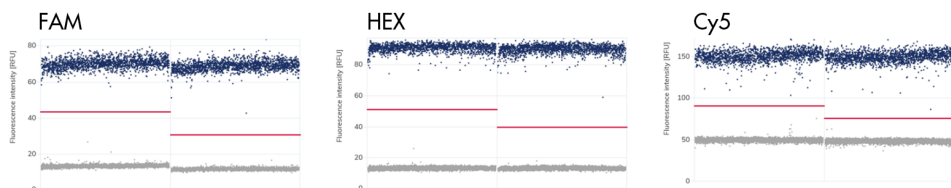
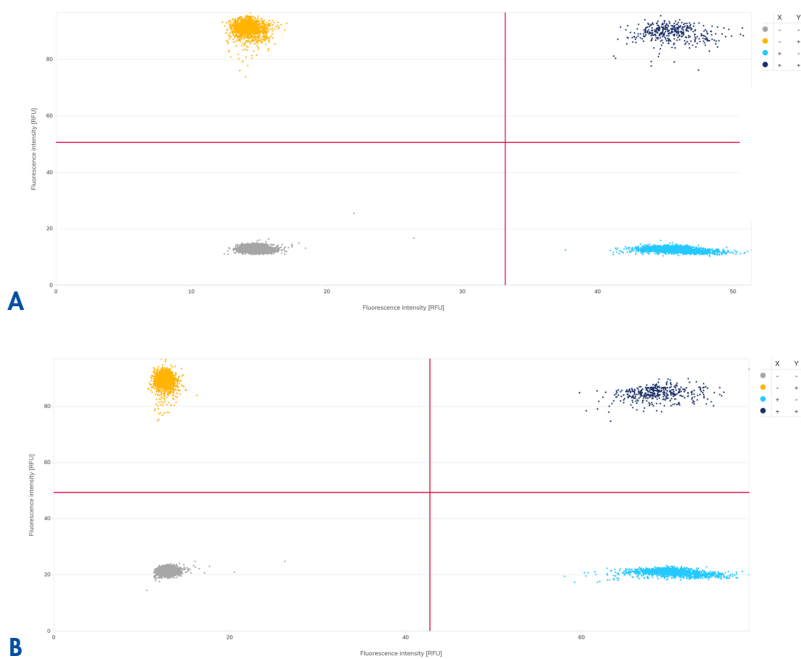


Figure 1. 1D scatter plot. Single-well data of RRE assays (Green, Yellow, and Crimson channel).



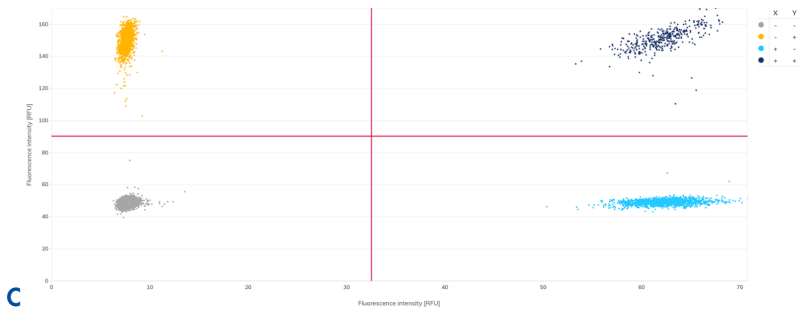


Figure 2. 2D scatter plot. Single-well data of (A) RRE assay (Yellow channel, Y-axis) and RPP30 assay (Green channel, X-axis) or (B) RRE assay (Green channel, X-axis) and RPP30 assay (Yellow channel, Y-axis) or (C) RRE assay (Crimson channel, Y-axis) and Albumin assay (Green channel, X-axis) with DNA input.

Document Revision History

| Date | Description |
|---------|-----------------|
| 07/2025 | Initial release |

For up-to-date licensing information and product-specific disclaimers, see the respective QIAGEN kit handbook or user manual.

Trademarks: QIAGEN®, Sample to Insight®, QIAcuity®. Registered names, trademarks, etc. used in this document, even when not specifically marked as such, are not to be considered unprotected by law.

07/2025 HB-3739-001 © 2025 QIAGEN, all rights reserved.

