

## Quick-Start Protocol

# Instructions for EasiCollect® Plus

This product is for research use only, and should not be used in diagnostic procedures. In addition, this is for single use only. Store the product at room temperature (15–25°C). When stored correctly, the FTA Cards are good until the expiration date printed on the kit box lid. Do not open package before use.

EasiCollect Plus is an all-in-one single-use product for the collection and storage of buccal cells. Cells are captured on the foam applicator by swabbing the inside of both cheeks and then transferred to an integral Indicating FTA® Card. FTA Cards are treated with a proprietary chemical mix that breaks open cells and releases DNA. The same chemical mix then protects the DNA from damage. The Indicating FTA Cards also contain a dye that turns white when colorless liquids are applied to the card.

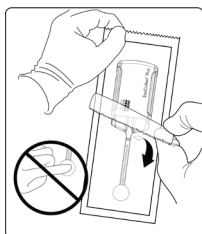
### Further information

- Safety Data Sheets: [www.qiagen.com/safety](http://www.qiagen.com/safety)
- Technical assistance: [support.qiagen.com](mailto:support@qiagen.com)

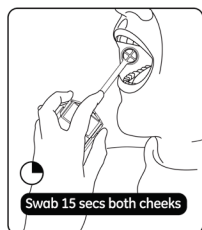
### Notes before starting

- Always wear gloves when handling biological samples, and avoid touching the surface of the foam head to prevent contamination.
- Sample collection may be improved if subjects avoid eating, drinking, or smoking 30 minutes prior to sample collection.

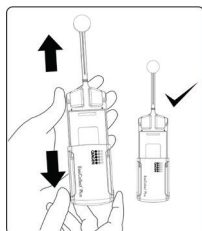
## FTA sample collection



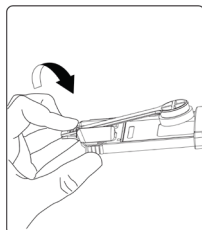
1. When collecting samples, always wear gloves and avoid touching the surface of the sample area and the foam head to avoid contamination. Slide out the EasiCollect Plus product.



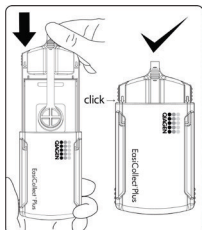
2. Place the foam head in the mouth, and using moderate pressure, run it along the gum-line and under the tongue. Once wet, rub the foam head inside of each cheek for 15 s. It is extremely important to ensure that the foam head is coated with saliva during this step to enable good sample transfer. Remove the foam head from the mouth.



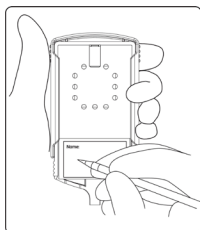
3. Hold the EasiCollect Plus as shown and slide the cover open.



4. Fold the arm over until the foam head contacts the FTA collection paper.

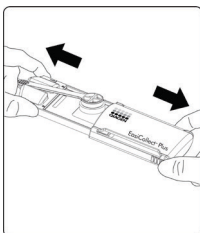


5. Slide the cover closed until it clicks and the cover edge lines up with the arrow on the body.

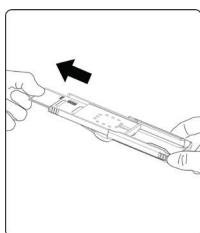


6. Record identification information on the back of the FTA Card Pack. After the indicating FTA card is dry, the sample can be processed immediately or packaged for transport. The EasiCollect Plus can be transported in a multibarrier pouch (WB100037) to a laboratory. Dried sample cards can be stored for long periods of time in a multibarrier pouch with a desiccant packet (WB100003).

## FTA card removal



1. Once dried, the sample card can be removed from the EasiCollect Plus and sent to the laboratory. Wearing gloves, hold the EasiCollect Plus as shown and slide the cover open, releasing the foam head.  
On occasion, the swab head may stick to the FTA paper during sample transfer. This does not affect the quality of the DNA sample or the performance of the sample in STR analysis.



2. The sample card can then be removed from the rear of the EasiCollect Plus.

## FTA sample processing

### Sample punching

Remove a 1.2 mm punch from the dried Indicating FTA Card using a manual punch such as the UniCore Puncher (cat. no. WB100074 or WB100028), a semi-automated puncher such as the BSD600 Ascent (cat. no. WB120036), or the fully automated STAR Q Punch AS (EC) system (cat no. 9002651) for high-throughput punching and integrated assay setup.

### Direct PCR

1. Add PCR reagents to the PCR reaction tube or plate including an appropriate amount of Investigator STR GO! Punch Buffer (cat. no. 386526 or 386528), e.g., QIAGEN's Investigator 24plex GO! (cat. no. 382426 or 382428) or Investigator IDplex GO! (cat. no. 381636 or 381638), that have been validated for use with punches taken directly from FTA cards.
2. Add the punch and proceed with the amplification process according to manufacturers' instructions.

### Pre-washed direct PCR

1. Remove a 2.0 mm punch from the dried Indicating FTA Card using a UniCore Punch (cat. no. WB100029 or WB100076).
2. Wash the punch with 200 µl QIAcard FTA Wash Buffer (WB120204) three times for 5 minutes each. Discard the washes.
3. Wash the punch twice with 200 µl TE-1 buffer (10 mM Tris-HCl, 0.1 mM EDTA, pH 8.0). Discard the washes.
4. Add PCR reagents to the punch and proceed with the amplification process according to manufacturers' instructions.

### Document Revision History

Date	Changes
01/2021	Initial release.

Trademarks: QIAGEN®, Sample to Insight®, EasiCollect®, FTA® (QIAGEN Group). Registered names, trademarks, etc. used in this document, even when not specifically marked as such, are not to be considered unprotected by law. 01/2021 HB-2726-001 © 2021 QIAGEN, all rights reserved.